

TOTAL EQUIPMENT ROOM CONTROL

BECSys7

- Versatile** Suitable for water parks, health clubs, pools, spas, fountains, zoos and aquariums
- Automated** Fully automatic backwash, with drain overflow protection, water-save mode and full data logging of backwash operation
- Efficient** Conserves water and reduces chemical usage, reduces operator error and assures compliance
- Flexible** Programmable for a wide variety of filtration systems, up to 16 filters!
- Expandable** Comprehensive expansion options allow total equipment room control and monitoring
- Powerful** Fully integrated water chemistry, filtration and circulation system control



- Secure** Multi-level, traceable password-protection for peace of mind
- Reliable** 5 year electronics / 2 year sensor warranty provides worry-free operation
- Easy-to-use** On-screen help intuitively guides the user through configuration options
- Supported** Factory-trained service and support

BECS
TECHNOLOGY

CE

INTERTEK
ETL
LISTED US

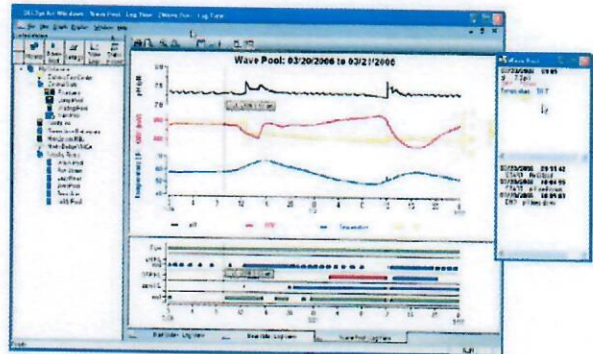
NSF
Certified to
NSF/ANSI Standard 50



TOTAL EQUIPMENT ROOM CONTROL

Total Equipment Room Integration

- Flowmeter monitoring and display
- Patent-pending VFD control algorithm
- Monitor Total Dynamic Head (TDH) of circ pump
- Free chlorine/bromine readings with bracketed control
- Turbidity control with polymer feed
- Heater integration, with fireman switch lockouts
- UV control, based upon ORP, PPM or both
- Ozone control, based upon ORP, PPM or both
- TDS/Conductivity monitoring and drain control
- Monitor chemical inventory levels
- Auto-fill and much more



Monitor and Analyze

- BECSys for Windows included
- Windows 7 compatible PC software
- Intuitive Graphical Analysis Tools
- All inputs and events recorded in integral data logs
- Full read/write access to all parameters



Stay Connected - Stay Informed

- Standard, integral 100BaseT Ethernet port
- Optional 56k data/fax modem
- RS232/USB PC connection port
- Connect wirelessly through BECSysRF 900MHz spread-spectrum link
- Backwash status and all integrated alarm notifications sent by email, text message, pager and/or fax.

Product Certifications

- NSF Certified to NSF/ANSI Standard 50
- ANSI/UL 61010-1 (ETL Listed)
- CAN/CSA C22-2 #61010-1 (ETL Listed)
- CE: EN 61010-1, EN 61326

Advanced Filtration Control

- Monitor turbidity/end BW early, upon desired clarity
- Waste line management; prevents BW tank overflow
- BW duration and water volume displayed on BECSys7
- Water reclamation options available!



About BECS Technology

BECS Technology, Inc. has been designing and manufacturing the industry's most reliable and innovative water chemistry controllers for over 20 years. All systems are designed and manufactured in-house at our facility in St. Louis, Missouri. Visit us online at www.becs.com.

Designed and Manufactured in the USA by:



BECS Technology, Inc.
 9487 Dielman Rock Island Industrial Drive
 Saint Louis, Missouri 63132 USA
www.becs.com
BECSysinfo@becs.com
 (314) 567-0088
 (314) 567-0610 fax

Proudly distributed in Saskatchewan
 by:



1250 Osler St. Regina, SK. 306-525-0508 / Fax: 306-525-0508
 2515 Millar Ave. Saskatoon, SK. 306-244-6700
 Email: info@paradisecommercial.ca